

# ELECTRIC MULTI DIRECTIONAL COUNTERBALANCE FORKLIFT TRUCKS

**FLUX-**

**UNBEATABLY**

**AGILE**

**AND EFFICIENT**



LOAD CAPACITIES BETWEEN 2 TO 7 TONNES  
MAST HEIGHTS UP TO 7500 MM

[www.hubtex.com](http://www.hubtex.com)

**HUBTEX.**

WE CREATE THE UNIQUE

# FLUX

## UNBEATABLY AGILE

With the new FLUX, HUBTEX presents a new generation of multidirectional counterbalance forklift trucks for combined indoor and outdoor use. The vehicle is designed for the universal handling of pallets and long goods in equal parts.

The intelligent vehicle control combined with state of the art electric drives, plus HUBTEX patented HX steering system, makes the truck efficient, easy to use and unbeatable in its class.

With its compact design and fixed mast, the FluX is the ideal solution for loading or unloading lorries. The cab has been designed to ensure excellent ergonomics, with enhanced visibility via the compact masts and fork carriages.

# Electric multidirectional counterbalance forklift trucks in detail

- *Load capacities up to 7.0 tonnes*
- *Compact lifting mast*
- *Excellent visibility*
- *Indoor and outdoor use*
- *Patented HX multi-directional steering for unique manoeuvrability*
- *Environmentally friendly and quiet electric drive*



Series	FluX 20	FluX 30	FluX 40	FluX 70
Load capacity (t)	2.0	3.0	4.0	7.0
Lift height (mm)	up to 7500	up to 7500	up to 7500	up to 7500
Frame length (mm)	1740	1850	1950	2500
Truck width (mm)	1700	1800	1900	2300
Frame	4-wheel	4-wheel	4-wheel	4-wheel
Tyre Equipment	EL	EL	EL	PU-Soft
Battery voltage (V)	48	48	48	80
Cabin	Q	Q	Q	Q

# 20 FLUX

The smallest version  
of the Flux has  
a load capacity  
of 2000 kg.

---



---

# Increased storage capacity – optimal utilization

---

**UP TO 100% MORE STORAGE SPACE**

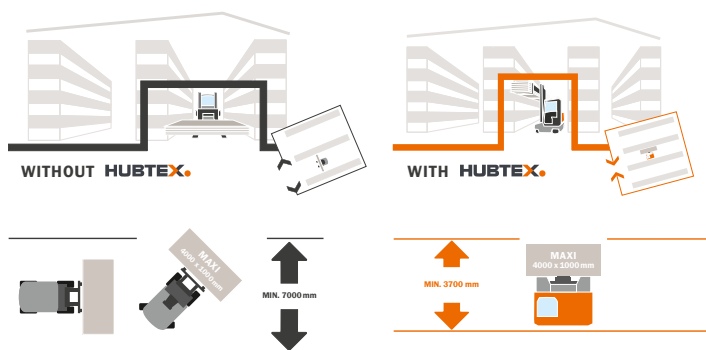
**FAST, SAFE AND EFFICIENT**

**REDUCTION OF DAMAGED GOODS**

With HUBTEX multidirectional solutions, narrow aisles and tight spaces are easy to drive through. The distances between the rows of shelves can be reduced to a minimum, which creates space for additional rows. HUBTEX ensures increased storage capacities and an optimised utilization of storage spaces.



## SMALLER AISLE WIDTH WITH MULTIDIRECTIONAL SIDeloadERS



Large-volume loads with load capacities from 2 to 7 tons

- *Electric drive*
- *Indoor and outdoor use*
- *Handling / Transport / Picking*
- *freely mobile*

---

**HUBTEX.**

---

# With the **FLUX** ergonomically and comfortably equipped

---



## ➤ DRIVER'S CAB

The enlarged cab gives the driver maximum comfort and freedom of movement.

All vehicle information is clearly displayed on the colour display of the latest generation HIT3 (HUBTEX information terminal). The HIT is mounted on an adjustable support arm so that the operator can adjust the alignment to suit themselves.

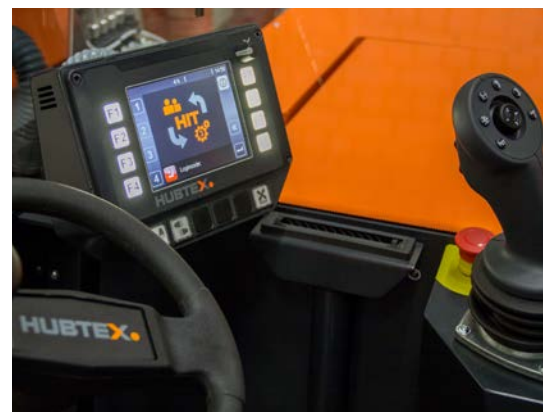
All hydraulic functions and the pre-selection of the direction of travel are operated as standard via the ergonomic multifunction joystick.

The height and inclination of the steering column and the air-suspended seat offer the driver additional comfort.



---

*HUBTEX information terminal*





Excellent visibility

## ➤ EXCELLENT VISIBILITY

The unique cab concept provides an optimal panoramic view.

The elimination of a mast-side cab column in conjunction with the new compact design of the mast gives the driver an unrivalled visibility radius. This provides the operator with an optimal overview of the machine.

*The electric drive is quiet and environmentally friendly.*



*The Flux is suitable for transporting and the handling of long and palletised goods.*



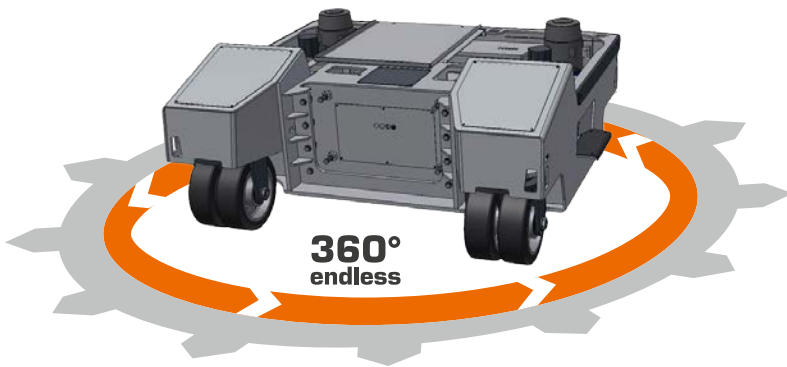
## ➤ BATTERIES

depending on the application, we have the right battery solution available. Standard is the classic lead-acid battery, while users with high Operating hours can benefit of the advantages of our Li-Ion batteries.



## ➤ MULTI-DIRECTIONAL STEERING SYSTEM HX

Equipped with the patented HX steering system, the FluX can change from longitudinal to transverse travel without an intermediate stop. This reduces the time required to switch wheels and offers optimum manoeuvrability.



---

*Patented HX multi-directional steering for unique manoeuvrability.*



This is particularly advantageous when used in free-moving warehouses with many changes of direction, when loading and unloading trucks or bulk storage.

The 4-wheel steering offers the largest steering angles and smallest turning circle. Another advantage is the significantly reduced wheel wear, as the direction of travel is changed while driving and not while stationary.

## ➤ CHASSIS, DRIVES AND TYRES

The series is equipped with a 4-wheel chassis with hydraulic level compensation to optimise driving and steering.

The use of the proven HUBTEX all-wheel steering guarantees large steering angles and smallest turning circle in all driving directions without restrictions.

Energy-efficient and powerful three-phase drives and three-phase pump units are used.

In order to meet the requirements of different floor conditions, for example asphalt or paved floors, the units are equipped with elastic tyres (EL) as standard.





*In addition to manoeuvrability,  
the high speeds is a particular advantage.*

---

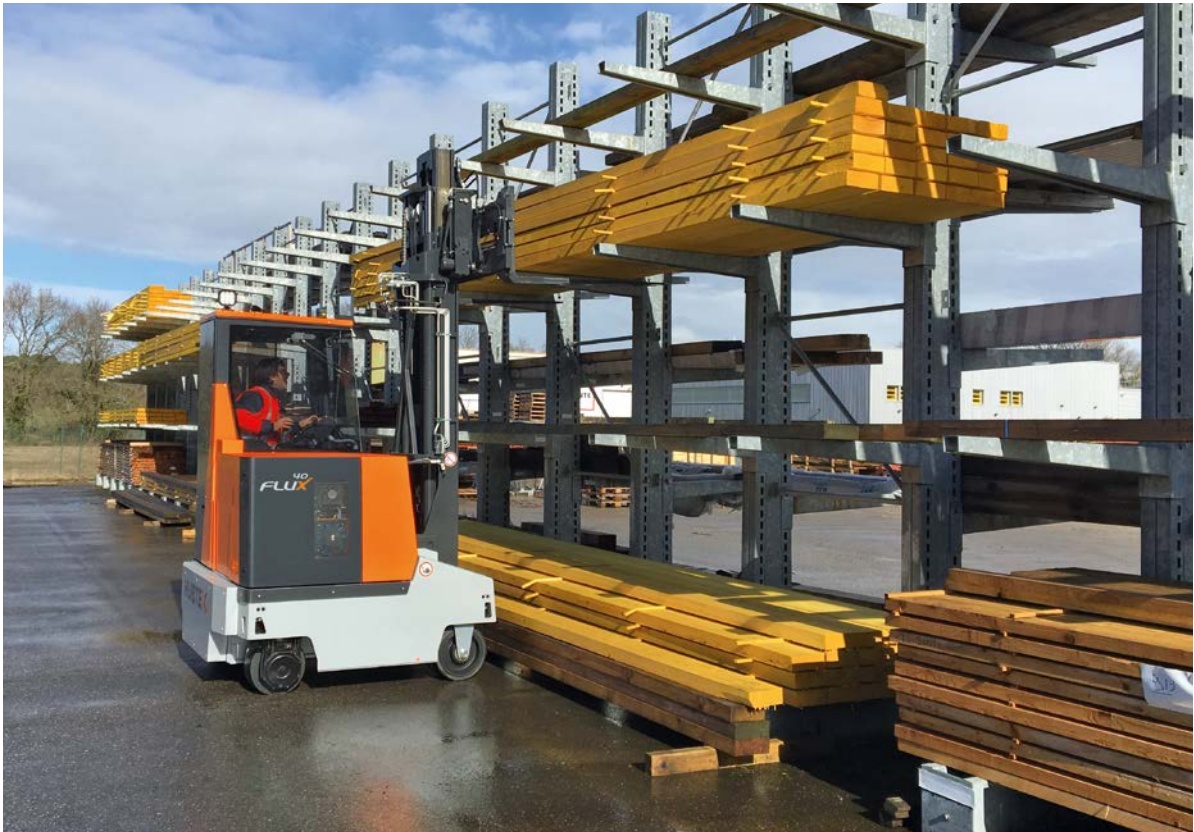
**30**  
**FLUX**

# 70 FLUX

*While significantly more compact than comparable forklifts the 7 t multidirectional forklift excels in particular when handling loads with high load centers.*

---

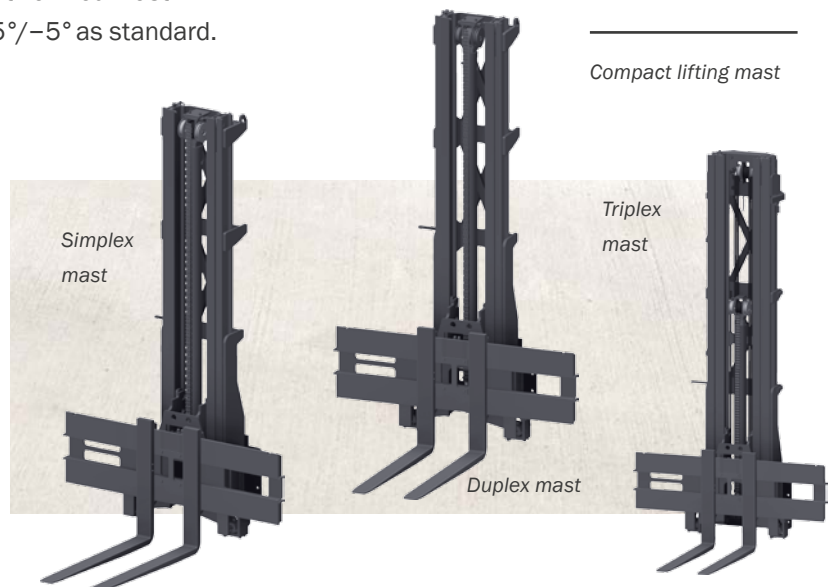




## ➤ FORK CARRIAGES AND BOOM

Booms and fork carriages have been newly developed for this series.

The focus of the development was to optimise visibility of the load and travel of the truck. The result is a very compact loader with optimised fork carriages. This offers effective and safe handling with a fixed mast and a fork carriage inclination of  $+5^{\circ}/-5^{\circ}$  as standard.



## HUBTEX VEHICLES

---

ELECTRIC-MULTIDIRECTIONAL-SIDELOADERS › DIESEL-/GAS-FOUR-WAY-SIDELOADERS › MULTIDIRECTIONAL COUNTERBALANCE FORKLIFT › ORDER PICKING SYSTEMS › GLASSTRANSPORT SYSTEMS › HEAVY DUTY TRANSPORT VEHICLES › REACH TRUCKS › SPECIAL TRUCKS › SECOND-HAND-AND RENTAL EQUIPMENT

---

# HUBTEX.

WE CREATE THE UNIQUE

---

HUBTEX MASCHINENBAU GMBH & CO. KG · Industriepark West · Werner-von-Siemens-Str. 8 · 36041 Fulda, Germany  
Tel.: +49 661 8382-0 · Fax: +49 661 8382-120 · [info@hubtex.com](mailto:info@hubtex.com) · [www.hubtex.com](http://www.hubtex.com)